



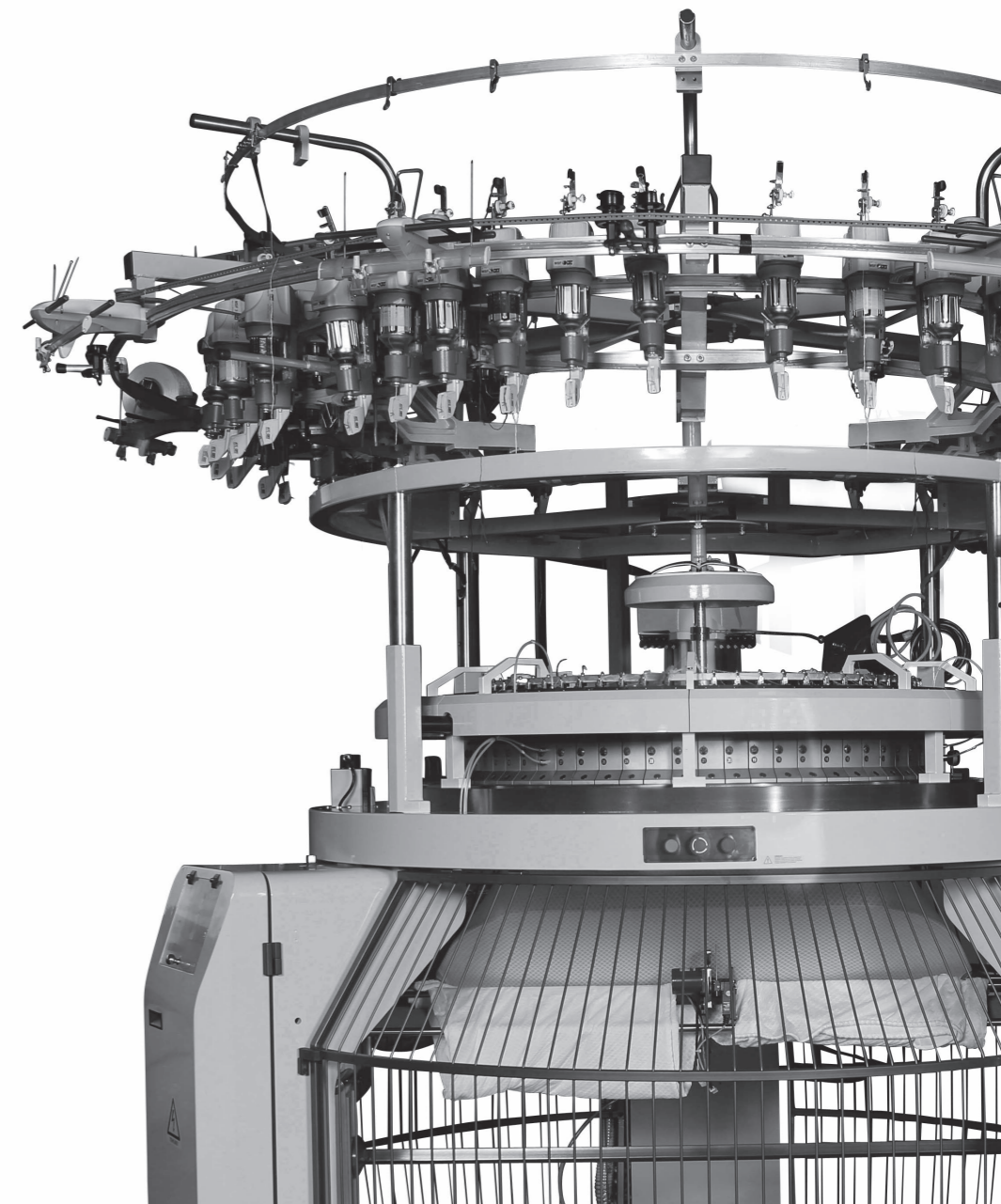
KCPJ-III /3A, 2A

Computerized Pile-Loop Knit
Electronic Jacquard Machine

Catalogue

Single Machine_05

Computerized Pile-Loop Knit Electronic
Jacquard Machine

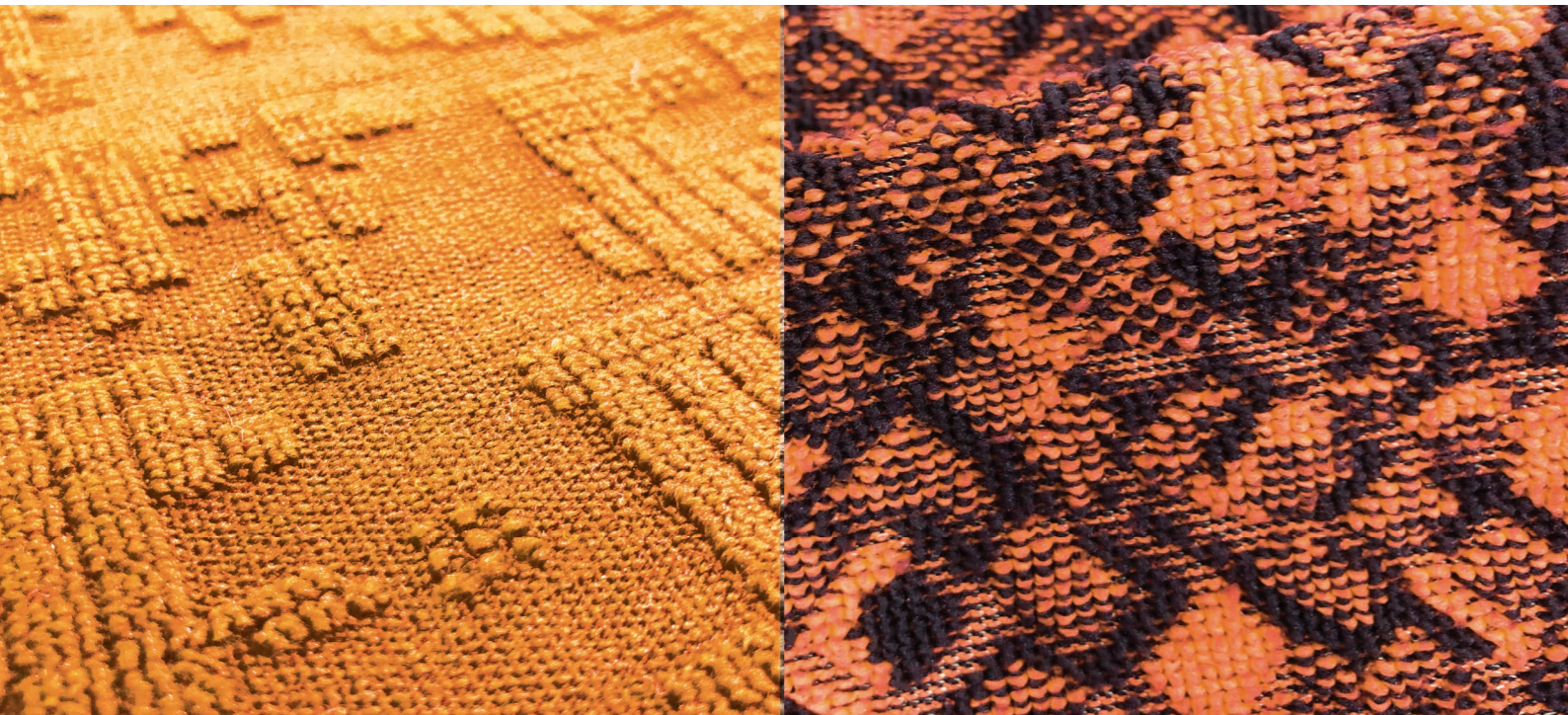


KEUMYONG

Homepage www.keumyong.com
E-mail kymc@keumyong.com

Head Office & Mfg **ADDRESS** 57, Paldal-ro 7-gil, Buk-gu, Daegu, KOREA
TEL +82-53-351-3081~7
FAX +82-53-351-8085

Seoul Office **ADDRESS** 4TH FLOOR, KEUMYONG BLDG. , 275, Gwangnaru-ro, Seongdong-gu, Seoul, KOREA
TEL +82-2-3409-4700/4231~3
FAX +82-2-3409-4040

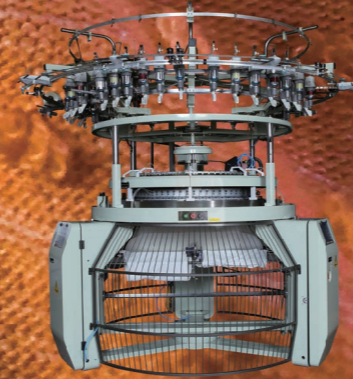


KCPJ-III/3A, 2A

Computerized Pile-Loop Knit Electronic Jacquard Machine

Specially has been designed for making pile-loop knit Jacquard fabric by applying a new concept and unique technology.

The movement of new type of sinker which electronically controlled and selected provides various and quality and pile Jacquard fabrics.



STANDARD SPECIFICATIONS

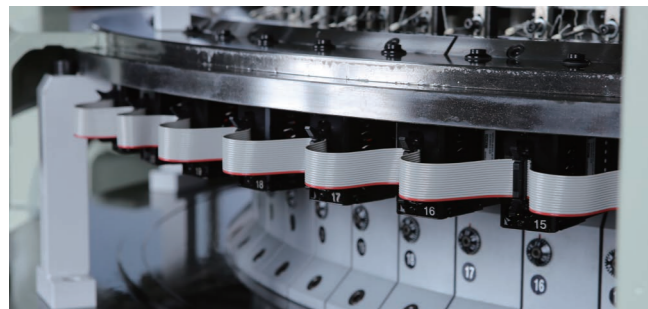
- Electronic selection device for sinker pin.
- Motorized fabric take-down system.
- Storage yarn feeding device(SFE).
- Positive feeding device.
- Pile-loop Length can be adjustable.
(1.8mm, 2.1mm, 2.4mm, 2.9mm, 3.2mm, 3.5mm, 1.6-3.3mm, 2.0-3.7mm : Optional Sinker Change)
- Ground, low pile and high pile can be knitted simultaneously.
(3-color pattern is available)

OPTIONAL PARTS

- Parts for 3 pile.
(Cam, yarn carrier, gear, etc.)



STRUCTURE



KCPJ-III / 3A, 2A

- Computerized single pile Jacquard
- Sinker pin with pattern jack set out on sinker frame.
- Design : USB Memory stick
- Patterning device : The electronic sinker selection (WAC controller)

FABRIC POTENTIAL

- 1-2-3 pile fabric with unlimited pile Jacquard pattern.



FABRIC VARIETY

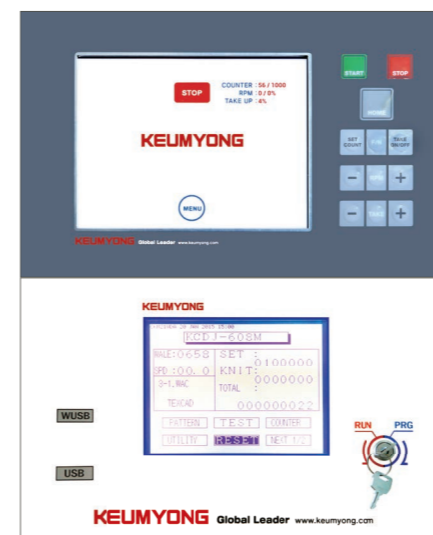
KCPJ-III / 3A, 2A

DIAMETER(Inch)	26"	•30"	32"	34"	36"
Gauge(N.PI)	16-24G				
Feeds	40F	48F	50F	54F	56F
Speed(R.P.M)	20-25	18-20	16-18	16-18	14-16
Cut	16/1,296	16/1,512	16/1,608	16/1,704	16/1,800
	18/1,464	18/1,704	18/1,800	18/1,920	18/2,040
	20/1,632	20/1,896	20/2,016	20/2,136	20/2,256
	22/1,800	22/2,064	22/2,208	22/2,352	22/2,496
	24/1,968	24/2,256	24/2,400	24/2,568	24/2,712
Feeding Device	Ground		Positive Feeder		
	Pile		Storage Feeder		
Driving	7.5HP AC Motor & Inverter				
Computer Controller	WAC Controller, WAC Actuator				

- Sinker selection at cylinder by selector.
- Unlimited creativity in pattern designs.
- Pattern save & storage in USB stick.
- Note : Speed depends on fabric structure and yarn material.



INTEGRATED CONTROLLER



- Fully integrated driving control mode with characters and graphic.
- Self-diagnostic and alarm function.
- Auto take-down tension and speed control system.
- Easy setting method and bar-graphic digital indicating for all functions.



PACKING DIMENSIONS

KCPJ-III/3A, 2A	30" DIAMETER
Approx. Net weight	2,300kg
Approx. Gross weight	2,700kg
Case size(mm) (Variable)	2,440 X 2,270 X 2,250 Length Width Height

*High leg : Approx. 200kg will be added to Net weight



STANDARD DIMENSIONS(30")

